

Managing Patients with Rheumatic Disorders in Primary Care



Peer-Reviewed Journal Articles, Published Educational Resources, and Consensus Guidelines

Bannuru RR, Osani MC, Vaysbrot EE, et al. OARSI guidelines for the non-surgical management of knee, hip, and polyarticular osteoarthritis. *Osteoarthritis Cartilage*. 2019;27(11):1578-1589.

doi:10.1016/j.joca.2019.06.011

Bichsel D, Liechti FD, Schlapbach JM, Wertli MM. Cross-sectional analysis of recommendations for the treatment of hip and knee osteoarthritis in clinical guidelines. *Arch Phys Med Rehabil*. 2022;103(3):559-569.e5. doi:10.1016/j.apmr.2021.07.801

Burmester GR, Bijlsma JWJ, Cutolo M, McInnes IB. Managing rheumatic and musculoskeletal diseases - past, present and future. *Nat Rev Rheumatol*. 2017;13(7):443-448. doi:10.1038/nrrheum.2017.95

Fraenkel L, Bathon JM, England BR, et al. 2021 American College of Rheumatology Guideline for the Treatment of Rheumatoid Arthritis. *Arthritis Care Res (Hoboken)*. 2021;73(7):924-939.

doi:10.1002/acr.24596

Kan HS, Chan PK, Chiu KY, et al. Non-surgical treatment of knee osteoarthritis. *Hong Kong Med J*.

2019;25(2):127-133. doi:10.12809/hkmj187600

Kolasinski SL, Neogi T, Hochberg MC, et al. 2019 American College of Rheumatology/Arthritis Foundation Guideline for the Management of Osteoarthritis of the Hand, Hip, and Knee [published correction appears in *Arthritis Care Res (Hoboken)*. 2021 May;73(5):764]. *Arthritis Care Res (Hoboken)*.

2020;72(2):149-162. doi:10.1002/acr.24131

Lee AS, Scofield RH, Hammitt KM, et al. Consensus Guidelines for Evaluation and Management of Pulmonary Disease in Sjögren's. *Chest*. 2021;159(2):683-698. doi:10.1016/j.chest.2020.10.011

Onel KB, Horton DB, Lovell DJ, et al. 2021 American College of Rheumatology Guideline for the Treatment of Juvenile Idiopathic Arthritis: Therapeutic Approaches for Oligoarthritis, Temporomandibular Joint Arthritis, and Systemic Juvenile Idiopathic Arthritis. *Arthritis Rheumatol*. 2022;74(4):553-569. doi:10.1002/art.42037

Sammaritano LR, Bermas BL, Chakravarty EE, et al. 2020 American College of Rheumatology Guideline for the Management of Reproductive Health in Rheumatic and Musculoskeletal Diseases. *Arthritis Rheumatol*. 2020;72(4):529-556. doi:10.1002/art.41191

Shiboski CH, Shiboski SC, Seror R, et al. 2016 American College of Rheumatology/European League Against Rheumatism Classification Criteria for Primary Sjögren's Syndrome: A Consensus and Data-Driven Methodology Involving Three International Patient Cohorts. *Arthritis Rheumatol*. 2017;69(1):35-45. doi:10.1002/art.39859

Sisó-Almirall A, Meijer JM, Brito-Zerón P, et al. Practical guidelines for the early diagnosis of Sjögren's syndrome in primary healthcare. *Clin Exp Rheumatol*. 2021;39 Suppl 133(6):197-205.

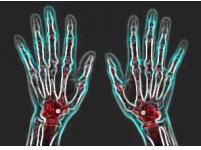
doi:10.55563/clinexprheumatol/pal3z7

Tunnicliffe DJ, Singh-Grewal D, Kim S, Craig JC, Tong A. Diagnosis, Monitoring, and Treatment of Systemic Lupus Erythematosus: A Systematic Review of Clinical Practice Guidelines. *Arthritis Care Res (Hoboken)*. 2015;67(10):1440-1452. doi:10.1002/acr.22591

Vivino FB, Carsons SE, Foulks G, et al. New Treatment Guidelines for Sjögren's Disease. *Rheum Dis Clin North Am*. 2016;42(3):531-551. doi:10.1016/j.rdc.2016.03.010

Ward MM, Deodhar A, Gensler LS, et al. 2019 Update of the American College of Rheumatology/Spondylitis Association of America/Spondyloarthritis Research and Treatment Network

Managing Patients with Rheumatic Disorders in Primary Care



Recommendations for the Treatment of Ankylosing Spondylitis and Nonradiographic Axial Spondyloarthritis. *Arthritis Care Res (Hoboken)*. 2019;71(10):1285-1299. doi:10.1002/acr.24025

Online Resources

Rheumatology Practice Guidelines. Available at <https://rheumatology.org/clinical-practice-guidelines>

Rheumatoid arthritis Clinical Disease Activity Index. Available at https://qxmd.com/calculate/calculator_279/clinical-disease-activity-index-for-ra-cdai

DAS28-CRP for Rheumatoid Arthritis. Available at https://qxmd.com/calculate/calculator_275/das28-crp-for-rheumatoid-arthritis

DAS28-ESR for Rheumatoid Arthritis. Available at https://qxmd.com/calculate/calculator_276/das28-esr-for-rheumatoid-arthritis

Simplified Disease Activity Index for RA (SDAI). Available at https://qxmd.com/calculate/calculator_197/simplified-disease-activity-index-for-ra-sdai

SLEDAI Damage Index Calculator. Available at https://qxmd.com/calculate/calculator_335/sledai-2k

SLICC/ACR Damage Index Calculator. Available at https://qxmd.com/calculate/calculator_336/slicc-acr-damage-index

ASDAS-CRP (Ankylosing Spondylitis Disease Activity Score). Available at https://qxmd.com/calculate/calculator_290/asdas-crp-ankylosing-spondylitis-disease-activity-score

ASDAS-ESR (Ankylosing Spondylitis Disease Activity Score). Available at https://qxmd.com/calculate/calculator_291/asdas-esr-ankylosing-spondylitis-disease-activity-score

Bath Ankylosing Spondylitis Disease Activity Index (BASDAI) in adults. Available at https://qxmd.com/calculate/calculator_299/basdai